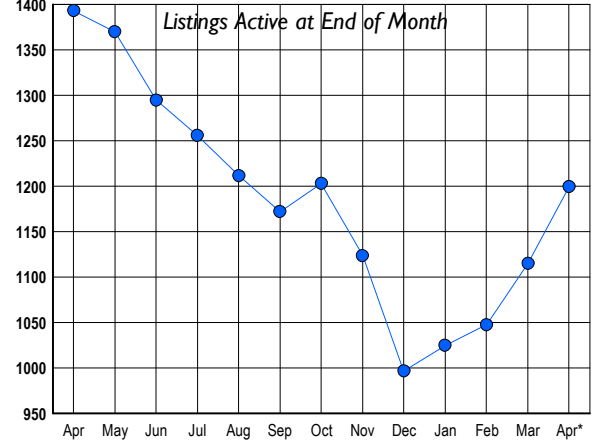




## LISTINGS

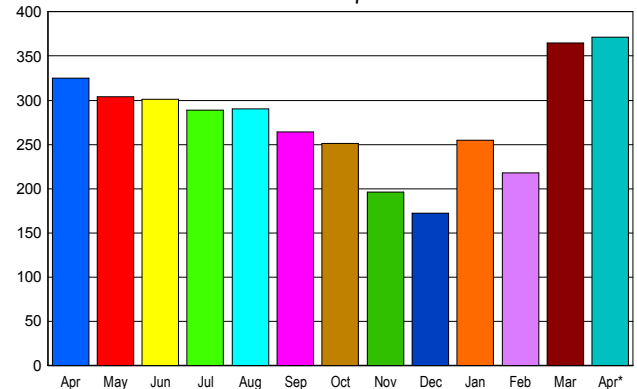
Prices Range	New This Month			Total Actives		
	2010	2009	% Change	2010	2009	% Change
0 - 149,999	40	35	14.3	78	97	-19.6
150,000 - 199,999	86	44	95.5	144	156	-7.7
200,000 - 299,999	157	119	31.9	336	383	-12.3
300,000 - 399,999	117	82	42.7	280	308	-9.1
400,000 - 499,999	62	55	12.7	161	201	-19.9
500,000 - 599,999	33	23	43.5	92	107	-14.0
600,000 - 699,999	15	11	36.4	39	52	-25.0
700,000 - 799,999	3	5	-40.0	18	20	-10.0
800,000 - 899,999	8	5	60.0	17	21	-19.0
900,000 - 999,999	2	2	0.0	13	14	-7.1
1,000,000 - 1,249,999	0	4	-100.0	4	11	-63.6
1,250,000 - 1,499,999	0	2	-100.0	3	7	-57.1
1,500,000 +	4	2	100.0	15	16	-6.3
<b>TOTALS</b>	<b>527</b>	<b>389</b>	<b>35.5</b>	<b>1200</b>	<b>1393</b>	<b>-13.9</b>

## INVENTORY TREND



## SALES TREND

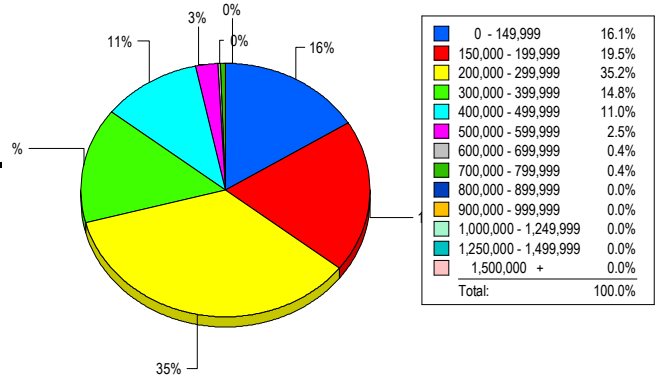
Contracts Ratified Per Month



## CONTRACTS

Price Range	New This Month			Year-To-Date		
	2010	2009	% Change	2010	2009	% Change
0 - 149,999	57	48	18.8	192	122	57.4
150,000 - 199,999	75	74	1.4	214	195	9.7
200,000 - 299,999	129	96	34.4	387	305	26.9
300,000 - 399,999	66	63	4.8	176	176	0.0
400,000 - 499,999	30	25	20.0	104	85	22.4
500,000 - 599,999	10	13	-23.1	35	24	45.8
600,000 - 699,999	4	3	33.3	14	10	40.0
700,000 - 799,999	0	2	-100.0	4	6	-33.3
800,000 - 899,999	0	0	0.0	0	1	-100.0
900,000 - 999,999	0	0	0.0	0	1	-100.0
1,000,000 - 1,249,999	0	0	0.0	1	0	100.0
1,250,000 - 1,499,999	0	0	0.0	1	0	100.0
1,500,000 +	0	1	-100.0	0	3	-100.0
<b>TOTALS</b>	<b>371</b>	<b>325</b>	<b>14.2</b>	<b>1128</b>	<b>928</b>	<b>21.6</b>

## MARKET BY PRICE RANGE



## SETTLEMENTS

Price Range	New This Month			Year-to-Date		
	2010	2009	% Change	2010	2009	% Change
0 - 149,999	38	27	40.7	134	75	78.7
150,000 - 199,999	46	40	15.0	148	103	43.7
200,000 - 299,999	83	51	62.7	251	193	30.1
300,000 - 399,999	35	38	-7.9	125	118	5.9
400,000 - 499,999	26	20	30.0	73	54	35.2
500,000 - 599,999	6	3	100.0	24	10	140.0
600,000 - 699,999	1	3	-66.7	6	5	20.0
700,000 - 799,999	1	0	100.0	3	5	-40.0
800,000 - 899,999	0	1	-100.0	0	3	-100.0
900,000 - 999,999	0	0	0.0	0	0	0.0
1,000,000 - 1,249,999	0	0	0.0	0	0	0.0
1,250,000 - 1,499,999	0	0	0.0	2	0	200.0
1,500,000 +	0	0	0.0	0	0	0.0
<b>TOTALS</b>	<b>236</b>	<b>183</b>	<b>29.0</b>	<b>766</b>	<b>566</b>	<b>35.3</b>

## AVERAGE & MEDIAN PRICE



DATA SOURCE: Metropolitan Regional Information Systems, Inc. (MRIS)

NOTES: Properties not listed through this Multiple Listing Service are not reflected. The term "sales" represents ratified purchase contracts. Current year information is preliminary and subject to revision. Current year-to-date contract information may not equal the sum of the monthly contract totals reported in